

# SULLAIR OFFSHORE SAFE ZONE COMPRESSORS WITH CRASH FRAMES

## APPLICATIONS | FEATURES



### COMPRESSOR APPLICATIONS

- Rig maintenance, including: sandblasting, painting, and air tools such as rivet busters, needle scalers, and demolition hammers.
- Well test flaring operations.
- Pipeline pigging and dewatering.

### CRASH FRAME FEATURES

- Meets Shell OPS 0055, API RP2A, and BHP Gulf of Mexico Container Codes.
- Optional DNV 2.7-1 designs.
- DNV 2.7-1 Lifting hardware (master link assembly, shackles, galvanized wire rope) optional.
- Fork lift pockets.
- Stackable to 2 high.
- Full fluid containment.
- Hot dip galvanized with black powder coat finish.

### COMPRESSOR FEATURES

- Stainless steel canopy.
- Hot dip galvanized compressor frame.
- Emergency stop.
- Air inlet shutoff valve.
- Spark arrestor.
- Anti-static belts and non-metallic fan.



# SULLAIR OFFSHORE SAFE ZONE COMPRESSORS WITH CRASH FRAMES SPECIFICATIONS

## CRASH FRAME WEIGHTS AND DIMENSIONS

### COMPRESSOR SPECIFICATIONS

MODEL	185	375 *	425 *	750 *	825	900 *	1500 **
Actual Delivery—cfm (m <sup>3</sup> /min)	185 (5.2)	375 (10.6)	425 (12.0)	750 (21.22)	825 (23.4)	900 (25.5)	1500 (42.5)
Rated Pressure—psig (bar)	100 (7.0)	100 (7.0)	100 (7.0)	125 (8.6)	125 (8.6)	100 (7.0)	350 (24.0)
Pressure Range—min psig (bar)	80 (5.5)	80 (5.5)	80 (5.5)	80 (5.5)	80 (5.5)	80 (5.5)	200 (14.0)
Pressure Range—max psig (bar)	125 (8.6)	125 (8.6)	125 (8.6)	125 (8.6)	125 (8.6)	125 (8.6)	350 (24.0)

### ENGINE

Make and Model	CAT C2.2	CAT C4.4	CAT C4.4	CAT C9	CAT C9	CAT C9	CAT C18
Operating Speed—rpm	2800	2200	2200	1800	1800	1800	1800

### PACKAGE WEIGHT AND DIMENSIONS

Max Lift Weight/Gross Weight—lbs (kg)	5750 (2600)	8000 (3629)	8000 (3629)	14000 (6350)	14000 (6350)	14000 (6350)	22000 (9979)
Tare Weight (Empty Weight of Skid)—lbs (kg)	3000 (1361)	3500 (1588)	3500 (1588)	4000 (1814)	4000 (1814)	4000 (1814)	8000 (3628)
Working Weight (Fluids, Compressor)—lbs (kg)	2750 (1247)	4500 (2041)	4500 (2041)	10000 (4536)	10000 (4536)	10000 (4536)	14000 (6350)
Package Length—in (mm)	106 (2692)	130 (3302)	130 (3302)	166 (4216)	166 (4216)	166 (4216)	239 (6071)
Package Width—in (mm)	72 (1829)	76 (1930)	76 (1930)	94 (2387)	94 (2387)	94 (2387)	96 (2438)
Package Height—in (mm)	76 (1930)	89 (2261)	89 (2261)	97 (2464)	97 (2464)	97 (2464)	102 (2591)
Fuel Run Time at FULL LOAD—hours	6.5	10	8.5	12	10.5	10	NA

\* Available in 150 psi (10 bar) Model 425-150 psi model has a John Deere 4045HF

\*\* This model has optional fuel tank

### DUAL PRESSURE/DUAL CAPACITY COMPRESSOR SPECIFICATIONS

MODEL	750XHH/900XHDL	900XHH/1150XHDL	1150XHH/1350XHDL
Actual Delivery—cfm (m <sup>3</sup> /min)	750/900 (21.22/25.5)	900/1150 (25.5/32.6)	1150/1350 (32.6/38.2)
Rated Pressure—psig (bar)	500/350 (34.5/24.0)	500/350 (34.5/24.0)	500/350 (34.5/24.0)

### ENGINE

Make and Model	CAT C15	CAT C15	CAT C18
Operating Speed—rpm	1800	1800	1800

This model has optional fuel tank (export only).

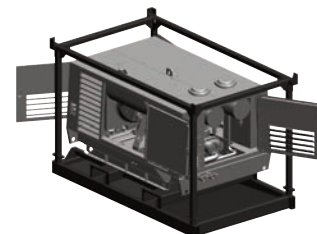
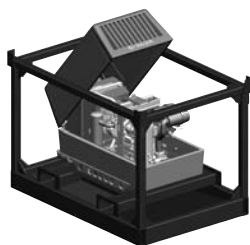
These models have the same package dimensions as the 1500.

### TYPICAL CRASH FRAMES

Left to right:  
185 CFM compressor  
375 CFM compressor  
750 CFM compressor

Front of literature:

Dual capacity, dual pressure



Sullair Corporation, a Business Unit of Hamilton Sundstrand, a United Technologies Company.  
© Copyright 2009 Sullair Corporation. All rights reserved.  
Specifications subject to change without notice.

SSL-1180

**SULLAIR CORPORATION**  
3700 East Michigan Boulevard,  
Michigan City, IN 46360 USA  
Telephone: 1.219.879.5451

**SULLAIR ARGENTINA**  
Goncalves Dias 1145, 1276  
Buenos Aires, Argentina  
Telephone: 54.11.5941.4444

**SULLAIR ASIA, LTD.**  
74 Joo Koon Circle, Jurong,  
Singapore 629093  
Telephone: 65.861.1211

**SULLAIR AUSTRALIA**  
324-332 Frankston-Dandenong Rd  
Dandenong South, Victoria 3175,  
Australia  
Telephone: 1300.242.674

**SULLAIR EUROPE**  
Zone des Granges, BP 82, 42602  
Montbrison, Cedex, France  
Telephone: 33.4.77.96.84.70

**SHENZHEN SULLAIR ASIA  
INDUSTRIAL CO., LTD.**  
Zuo Pao Tai Road  
Chiwan, Shekou  
Shenzhen 518068, China  
Telephone: 86.755.2685.1686

**SULLAIR TAIWAN, LTD.**  
3F-1, No. 248  
Chung Shan Road  
Lin-Kou Hsiang  
Taipei Hsien, Taiwan  
Telephone: 886.2.2601.3500